

EKSTRUM

ET

SIMMENTALS

& SIMM/GENETICS

Annual

2018 Bull Sale

FEBRUARY 17, 2018

Kimball, SD

Check us out on Facebook



New Herd Sires BBS Hurricane D15 and DKSR Coach D95

Dear Friends

Welcome to our annual bull sale. This last year has been one that has had it challenges with drought conditions that plagued us and a large part of the South Dakota and beyond. We were fortunate enough to put up enough feed and make the pastures hold out with the dry conditions. We weaned the earliest we have ever have this year due to the drought conditions. Even with this the Simmental based genetics didn't skip a beat, and our calves have been one of the most impressive sets we have raised to date.

All our calves come off pasture with no creep. With over 45 years of raising Simmentals and over 55 years of AIing and performance testing we believe this tells the true story of the calves at weaning time without being fluffed. It truly shows what bloodlines excel in the real world. The bulls were developed on a high forage ration using ground hay, ground alfalfa, corn silage, and DDG's to ensure sound feet and longevity. All our cattle rations are formulated and balanced by Livestock Visions (DVM Bruce Naasz and nutritionist Steve Peterson). All our herd health is conducted by Central Dakota Animal Clinic, DVM Jay Alberda.

If your breeding program consists of using purebred Simmentals, SimAngus, or Simm/Red Angus bulls we have performance oriented bulls to fit your program. Stop by anytime to come and inspect the bulls or go to www.ekstrumsimmentals.com for updated information. Videos and pictures will be on DV Auction.

Thanks,
The Ekstrums

EKSTRUM SIMMENTALS - 2018 - ANNUAL BULL SALE February 17, 2018

Health: All the bulls have had their shots and been poured. We will semen test the bull (s) that you purchase and will be vaccinated for foot rot and anthrax.

Terms of Sale: All sales are cash or check on day of sale.

Buyer Discount: First bull will be at full price and any bull after that will \$50 off.

Guarantee: All bulls are guaranteed against breeding injury through the first breeding season and have a breeding injury guarantee. If a replacement bull is available one will be provided. If the buyer prefers credit toward another bull, the credit will be given in the following year's sale minus the salvage value of the original bull.

Each bull becomes property and therefore is also the risk of the purchaser after it is sold. Bull mortality and ASD infertility insurance will be offered by Martin-Trudeau Insurance.

We reserve the right to collect 100 units of semen on any bull in the sale to use at our own discretion. The collection will be at our expense and buyers convenience.

Conditions of Sale: All animals will be sold in accordance with the suggested guidelines of the American Simmental Association and are available by request.

Announcements: Announcements on sale day take precedence over printed material.

Wintering: We will keep the bulls free of charge until April 1st. Arrangements can be made to keep them longer.

Trucking: We deliver free within the state of South Dakota and will assist with arrangements for out of state buyers.

Sale location: At the Ranch 5 miles south of Kimball, SD.

Selling 40 yearling bulls.

Auctioneer: Justin Dikoff 605-290-0635

Sale Day Phone's:

605-778-6414

605-730-1511 Clay cell

605-730-1521 John cell

605-730-6703 Jim Benda cell

605-214-3532 Colton Buus, representing ASA

Contact info:

Ekstrum Simmentals

36220 257th St Kimball SD 57355

Clay 605-778-6185, cell 605-730-1511,

John 605-778-6414, Cell 605-730-1521.

Go to www.ekstrumsimmentals.com for pictures and videos of the bulls. You can also view viedos and catalog at DVAuctions.



REFERENCE SIRES

Name	ASA #	Color - HPS - Breeds	CE	BW	WW	YW	MCE	MM	MWW	CW	MB	REA	API	TI
RBS BOISE B63	2950871	Black - Polled - PB SM	12.1	0.5	59	96.2	11.3	27.9	57.4	28.4	.20	1.03	152	72
KUNTZ SHERIFF 8A	3038020	Polled - PB SM	23	-4.3	60.1	97.3	14.4	31.3	61.3	21.8	-.16	0.53	134	70
WS INDEPENDENCE T18	2411358	Black - Polled - PB SM	15.4	2.1	60.6	88	16.4	16.5	46.8	25.3	.03	0.9	125	65
TRAXS DEADWOOD A82	2795819	Red - Polled - PB SM	8.1	4.5	75	123	6.4	30.7	68.2	50.1	-.01	1.08	132	71
WELSHS DEW IT RIGHT067T	2403649	Black - Polled - PB SM	16.3	0.3	63.6	82.5	11.2	11.4	43.2	18.7	.15	0.83	137	71
TNT TOP CUT P274	2267041	Black - Polled - PB SM	-3.2	6.8	102.6	157.6	10.6	14.2	65.5	73.1	-.38	0.97	89	70
CCR COWBOY CUT 5048Z	2703910	Black - Polled - PB SM	17.5	1.8	85.9	117.2	13.5	36.9	79.9	41.1	.68	0.78	163	97
R PLUS 3197A	2883846	Polled - PB SM	3.4	6.4	70.1	94.9	12.8	21.7	56.7	35.3	-.49	0.43	75	50
LFE THE RIDDLER 323B	3173936	Black - Polled - PB SM	8.3	3.4	92.5	138.8	12.8	20.7	66.9	56.8	-.11	0.85	113	78
BBS JUSTICE A207	2772745	Black - Polled - PB SM	4.8	5.1	80	127.4	9.4	21.3	61.3	53.3	.02	1.22	117	72
JBS MR PACE 010B	2896770	Red - Polled - PB SM	10.5	2.7	72.6	110.8	10.9	28.5	64.8	39.7	.27	1.16	142	78
MRL 128W	2529297	Polled - PB SM	4.3	6.1	58	78.1	10.3	24.1	53.1	25.2	-.04	0.85	104	56
WS PRIME BEEF Z8	2675742	Red - Polled - PB SM	18.8	-2.1	71.4	107.1	12.6	16.9	52.6	30.2	.43	1.07	174	87

Angus and Red Angus Genetics

Name	ASA #	Color - HPS - Breeds	CE	BW	WW	YW	MCE	MM	MWW	CW	MB	REA	API	TI
ANDRAS NEW DIRECTION R240	2839169	Red - Polled - PB AR	14.1	-2.7	63.3	108.5	4	11.5	43.1	31.1	.51	-0.03	134	67
S A V FINAL ANSWER 0035	2320695	Black - Polled - PB AN	23.3	-4.4	73.9	117.3	10.6	21.4	58.3	33.1	.61	0.17	146	80
R B TOUR OF DUTY 177	2828043	Black - Polled - PB AN	15.6	-0.1	81.8	143	15.2	32.7	73.6	55.4	.54	0.88	132	81



BBS Justice



CCR Cowboy Cut



LFE The Riddler



RBS Boise



Kodiak



TRAX Deadwood



Kuntz Sheriff – Sire of Lot 1



LOT 2



LOT 3

4 EKR KEYSTONE 033E ASA# 3320259

Tattoo: 033E • BD: 2/7/17
Red • PB SM

Sire: TRAXS DEADWOOD A82
MJ MARATHON 6W
C2 SHEAR FORCE 62W

Dam: CCE EKR VICTORIA 033X
WHEATLAND RED TEDDY 457P
CCE EKR MS SHOT GUN 836U

Act. BW	90
Act. WW	696
Adj. WW	758
1/6 WT	1216
Adj. YW	1310
ADG	4.3

CE	BW	WW	YW	MCE	MM	MWW	MB	REA	BWratio	WWratio	WDA	API	TI
9.1	2.7	62	95	8.8	25.2	56.1	-0.06	0.71	103	93	3.65	116	63

Nice outcross red bull. Homo polled, solid red non diluter. Scrotal 36 cm. Frame Score 6.2.

1 EKR LAWMAN 3E ASA# 3320550

Tattoo: 3E • BD: 2/10/17
Red • PB SM
Sire: KUNTZ SHERIFF 8A
KUNTZ MARSHALL 12Y
PEACOCK'S LI'L NETTIE 23Y
Dam: ANKONY MISS CANDACE R169
BOZ REDCOAT
GFI CANDACE G51

Act. BW	95
Act. WW	728
Adj. WW	811
1/6 WT	1232
Adj. YW	1345
ADG	4.17

CE	BW	WW	YW	MCE	MM	MWW	MB	REA	BWratio	WWratio	WDA	API	TI
12.7	0.8	68	105	13.9	33.9	67.7	-0.05	0.65			3.73	119	70

Lawman comes out of our old donor cow, Candice R169 and the ever popular calving ease bull Sheriff; he has an excellent EPD profile from birth to yearling and showing him in the top % of the breed for maternal milk and maternal weaning weight. There are two flush sisters in the keeper pen; predictable genetics bid with confidence. Homo polled and solid red non diluter. Scrotal 42 cm. Frame Score 6.4.

2 EKR KLONDIKE 019E ASA# 3320377

Tattoo: 019E • BD: 2/21/17
Red • PB SM
Sire: MRL 128W
MRL BLACK BEAR 79S
MRL MISS 842S
Dam: CCE EKR RED POWDER 019X
TNT GUNNER N208
CCE MS. DUTCHESS 618S

Act. BW	100
Act. WW	732
Adj. WW	844
1/6 WT	1312
Adj. YW	1460
ADG	4.79

CE	BW	WW	YW	MCE	MM	MWW	MB	REA	BWratio	WWratio	WDA	API	TI
7.3	4.8	71	102	12.7	25.3	60.6	-0.04	0.57	93	103	4.11	110	65

If you are looking to add performance into you next calf crop this guy will do the job; He ratioed 103 for weaning weight and 107 for yearling weight. His dam has a 107 ratio for weaning off 6 calves in her lifetime. Tested home polled and non diluter. Scrotal 41 cm. Frame Score 6.8.

3 EKR NIGHT HAWK 028E ASA# 3320295

Tattoo: 028E • BD: 2/21/17
Black • PB SM
Sire: LFE THE RIDDLER 323B
LFE GOTHAM 819Y
LFE BS CHARO 23Y
Dam: CCE EKR MS BRAVO 028X
KS BRAVADO P68
CCE EKR MS SHOT GUN 804U

Act. BW	99
Act. WW	772
Adj. WW	901
1/6 WT	1260
Adj. YW	1419
ADG	4.03

CE	BW	WW	YW	MCE	MM	MWW	MB	REA	BWratio	WWratio	WDA	API	TI
11.5	2.2	78	114	13.9	27.7	66.5	-0.14	0.55	93	110	3.95	112	71

This guy is sure to garner attention sale day. HERD BULL potential here!! 028E is sired by the \$170,000 LFE Riddler. He boasts a beautiful EPD profile ranking in the top 5% for WW, top 10% for YW, MM, MCE, and top 2% for MWW. He tied for second highest weaning bull in the pen with a WW ratio of 110 and with a 104 YW ratio. His dam has weaned off 6 calves with a 108 WW ratio. She raised a crowd favorite 5 years ago that went to Dorwart Farms and is the great grand dam of another stand out, lot 31. Homo polled, hetro black. Scrotal 41 cm. Frame Score 6.6.

5 EKR MAGISTRATE 070E ASA# 3320462

Tattoo: 070E • BD: 3/6/17
Black • PB SM
Sire: BBS JUSTICE A207
MLC MR JUSTICE W744
TNT MISS APRIL N134
Dam: R F S MAXIMUM DREAM 35X
SVF/NJC BUILT RIGHT N48
DR MS 600U BLACK DREAM

Act. BW	97
Act. WW	640
Adj. WW	795
1/6 WT	1222
Adj. YW	1412
ADG	4.81

CE	BW	WW	YW	MCE	MM	MWW	MB	REA	BWratio	WWratio	WDA	API	TI
7.2	4.1	72	115	8.4	21.6	57.6	0.08	0.87	95	97	3.99	122	70

Maximum Dream did it again, her Justice calf ratioed 103 for yearling weight and his WW EPD'S are in the top 15% of the breed as with his YW EPD'S being in the top 10%. His maternal brother was our high seller in 2013 plus he had a stand out full brother last year, both selling to James McCord. Homo Black, Homo Polled Scrotal 38 cm. Frame Score 6.5.

6

EKR 2X CUT 115E

ASA# 3320529

Tattoo: 115E • BD: 3/2/17
Black • 3/4 SM 3/16 AN 1/16 CS

Sire: CCR TRIPLE C SINGLETARY S3H
CCR COWBOY CUT 5048Z
CCR MS 4045 TIME 7322T

Dam: TNT TOP CUT P274
CCE EKR MS TC 115Y
424

Act. BW	93
Act. WW	742
Adj. WW	899
1/6 WT	1298
Adj. YW	1485
ADG	4.6

EPDs	CE	BW	WW	YW	MCE	MM	MWW	MB	REA	BWratio	WWratio	WDA	API	TI
	9.5	3.6	94	137	9.8	20.8	67.8	0.31	0.57	101	110	4.19	135	88

What can I say here but "Power Bull". He ratioed 110 for WW and 109 for YW. He ranks in the top 1% for WW EPD'S and 2% for YW and MWW EPD'S in the breed. Homo Polled, Hetro Black Scrotal 39 cm. Frame Score 6.8.



LOT 6

7

EKR DOUBLE CUT 122E

ASA# 3320458

Tattoo: 122E • BD: 2/19/17
Black • 3/4 SM 1/4 AR

Sire: CCR TRIPLE C SINGLETARY S3H
CCR COWBOY CUT 5048Z
CCR MS 4045 TIME 7322T

Dam: TNT TOP CUT P274
CCE EKR MS TC 122Y
CCE MS. CHATAUE 622S

Act. BW	99
Act. WW	692
Adj. WW	785
1/6 WT	1192
Adj. YW	1311
ADG	4.13

EPDs	CE	BW	WW	YW	MCE	MM	MWW	MB	REA	BWratio	WWratio	WDA	API	TI
	8.4	4.3	88	129	10.7	28.9	73.2	0.24	0.68			3.71	131	83

Power and maternal bred in here. He ranks in the top 1% for WW, 4% for YW, 5% for MM, and 1% for MWW EPD'S in the breed. Twin to Lot 8 bull, buy both for a uniformed calf crop. Hetro Polled/Scurred, Hetro Black. Scrotal 39 cm. Frame Score 6.8.

8

EKR TWIN CUT E122

ASA# 3320541

Tattoo: E122 • BD: 2/19/17
Black • 3/4 SM 1/4 AR

Sire: CCR TRIPLE C SINGLETARY S3H
CCR COWBOY CUT 5048Z
CCR MS 4045 TIME 7322T

Dam: TNT TOP CUT P274
CCE EKR MS TC 122Y
CCE MS. CHATAUE 622S

Act. BW	100
Act. WW	746
Adj. WW	850
1/6 WT	1314
Adj. YW	1448
ADG	4.69

EPDs	CE	BW	WW	YW	MCE	MM	MWW	MB	REA	BWratio	WWratio	WDA	API	TI
	8.4	4.3	88	129	10.7	28.9	73.2	0.24	0.68			4.09	131	83

Twin brother to the Lot 7 bull that also came in as our second highest yearling weight bull. He boasts the same credentials for EPD ranking his twin brother does. Homo Polled, Hetro Black. Scrotal 41 cm. Frame Score 6.4.

9

EKR SPUD 129E

ASA# 3320452

Tattoo: 129E • BD: 2/10/17
Black • PB SM

Sire: RBS MR ISHEE CATALYST
RBS BOISE B63
RBS MISS S63

Dam: IPU BLACK CINCH 125T
CCE EKR MS LATIGO 129Y
CCE EKR MS TOP CUT 713T

Act. BW	98
Act. WW	748
Adj. WW	822
1/6 WT	1226
Adj. YW	1326
ADG	3.95

EPDs	CE	BW	WW	YW	MCE	MM	MWW	MB	REA	BWratio	WWratio	WDA	API	TI
	8.3	3.3	72	110	10.9	24.4	60.4	0.08	0.8	95	100	3.72	127	71

Looking for some different genetics? Sired by the \$40,000 Bosie, Spud ranks in the top 15% of the breed for WW and YW EPD'S and the top 10% for MWW. His dam has ratioed 105 for WW on 5 calves. Outcross performance genetics. Homo Polled, Hetro Black. Scrotal 38.5 cm. Frame Score 6.4.



LOT 9

10

EKR REGGIE 146E

ASA# 3320485

Tattoo: 146E • BD: 2/17/17
Red • PB SM

Sire: R PLUS R REDGE 8018U
R PLUS 3197A
MISS R PLUS 8306U

Dam: WHEATLAND RED ACE 747T
CCE LADY A 146Y
CCE MS BRAVO 927W

Act. BW	96
Act. WW	646
Adj. WW	736
1/6 WT	1186
Adj. YW	1308
ADG	4.46

EPDs	CE	BW	WW	YW	MCE	MM	MWW	MB	REA	BWratio	WWratio	WDA	API	TI
	7	4.5	61	88	13.1	24.6	55.3	-0.27	0.3	97	90	3.67	89	54

Out cross red genetics. Dam has ratioed 102 for WW on 5 calves. Homo Polled, solid red non diluter. Scrotal 42 cm. Frame Score 6.7.



Drew Ekstrum with his double drop tine buck



11 EKR COYBOY TROY 206E ASA# 3320360

Tattoo: 206E • BD: 2/17/17
 Black • PB SM
 Sire: CCR COWBOY CUT 5048Z
 CCR MS 4045 TIME 7322T
 MRL 128W
 Dam: CCE EKR MS YUKON 206Z
 CCE EKR MSLIGHTENING233M

Act. BW	90
Act. WW	772
Adj. WW	884
1/6 WT	1212
Adj. YW	1348
ADG	3.64

EPDs	CE	BW	WW	YW	MCE	MM	MWW	MB	REA	BWratio	WWratio	WDA	API	TI
	12	2.7	75	102	10.2	34	71.6	0.32	0.68	103	108	3.75	137	80

If you want calves that wean heavy and have the look this dude will do it. Troy tied for second for heaviest weaning weight with a WW ratio of 108. He ranks in the top 10% of the breed for WW EPD'S and top 1% for both MM and MWW EPD'S. His dam has ratioed 105 for both BW and WW on 4 calves. Being a blaze faced, Troy has the phenotype to go along with an impressive EPD profile. Homo Polled, Hetro Black. Scrotal 40 cm. Frame Score 6.4.



12 EKR NIGHT RANGER 271E ASA# 3320327

Tattoo: 271E • BD: 2/20/17
 Black • PB SM
 Sire: LFE GOTHAM 819Y
 THE RIDDLER 323B
 LFE BS CHARO 23Y
 TNT TOP GUN R244
 Dam: CCE EKR MS TOMKAT 271Z
 CCE EKR MS. EXCEL 650S

Act. BW	101
Act. WW	714
Adj. WW	825
1/6 WT	1294
Adj. YW	1437
ADG	4.79

EPDs	CE	BW	WW	YW	MCE	MM	MWW	MB	REA	BWratio	WWratio	WDA	API	TI
	6.8	5.1	89	137	7.7	15.8	60	-0.07	0.73	91	101	4.04	107	74

This guy won't be hard to find sale day. Another son out of the \$170,000 Riddler. If I had to choose between him and his 1/2 brother, lot 3, I would take them both! He ratioed 101 for WW and 105 for YW and ranks in the top 1% for the breed for WW, YW, ADG EPD's. Dam has ratioed 101 for WW on 4 calves. Dam is also the grand dam to lot 21 and a full sister to a stand out bull we sold to Tom and Andy Geppert. Predictable outcross black genetics. Homo Polled, Hetro Black. Scrotal 40 cm. Frame Score 6.7.



13 EKR PRAIRE FIRE 307E ASA# 3320274

Tattoo: 307E • BD: 2/20/17
 Red • PB SM
 Sire: R PLUS REDGE 8018U
 R PLUS 3197A
 MISS R PLUS 8306U
 KS BRAVADO P68
 Dam: CCE EKR MS BRAVO 307A
 CCE EKR MS TC 104Y

Act. BW	96
Act. WW	766
Adj. WW	913
1/6 WT	1358
Adj. YW	1538
ADG	4.89

EPDs	CE	BW	WW	YW	MCE	MM	MWW	MB	REA	BWratio	WWratio	WDA	API	TI
	6.9	4.8	86	129	12.8	24.5	67.2	-0.32	0.49	94	112	4.24	99	67

Big time herd bull potential here with performance to back him up! One of the most impressive red bulls we have raised to date. He won top honors for heaviest yearling weight and 2nd highest rate of gain. His individual credentials are impressive ratioing 112 for WW and YW and ranking in the top 1% of the breed for WW, YW, and MWW EPD'S and the top 10% for MCE EPD's. His young dam has a WW ratio of 108 on 3 calves raised. Homo Polled solid red non diluter. Scrotal 39.5 cm. Frame Score 6.9.



14 EKR TOMAHAWK 366E ASA# 3320532

Tattoo: 366E • BD: 2/19/17
 Black • PB SM
 Sire: LFE GOTHAM 819Y
 THE RIDDLER 323B
 LFE BS CHARO 23Y
 TNT TOP CUT P274
 Dam: CCE EKR MS TC 366A
 CCE EKR MS TOBY 809U

Act. BW	93
Act. WW	728
Adj. WW	860
1/6 WT	1270
Adj. YW	1432
ADG	4.48

EPDs	CE	BW	WW	YW	MCE	MM	MWW	MB	REA	BWratio	WWratio	WDA	API	TI
	5.2	3.8	93	141	11.8	17.2	63.4	-0.14	0.84	99	105	3.96	109	76

Wow! Another top end Riddler calf packed with performance. Every Riddler we have raised was put in the keeper pen this year, bull or heifer! He ratioed 105 for both WW and YW, plus boasting being in the top 1% of the breed for WW, YW, and ADG EPD's and top 4% for MWW. His maternal brother sold a couple of years ago to Tom Gorzalka from Wyoming. Homo Polled, Hetro Black Scrotal 42 cm. Frame Score 6.5.



15 EKR OGALLALA 387E

ASA# 3320423

Tattoo: 387E • BD: 2/22/17

Red • PB SM

Sire: TRAXS DEADWOOD A82
MJ MARATHON 6W
C2 SHEAR FORCE 62W

Dam: CCE EKR MS YUKON 387A
MRL 128W
CCE EKR MS LIGHTENING725T

Act. BW	101
Act. WW	688
Adj. WW	821
1/6 WT	1226
Adj. YW	1388
ADG	4.45

EPDs	CE	BW	WW	YW	MCE	MM	MWW	MB	REA	BWratio	WWratio	WDA	API	TI
	4.8	6.3	75	114	7	24.6	62	-0.03	0.79	90	100	3.86	114	66

Outcross commercial cowboy bull here. This guy is packed with performance ratioing at 100 for WW and 102 for YW and ranking in the top 10% of the breed for WW, YW, and MWW EPD's. Hetro polled solid red non diluter. Scrotal 38 cm. Frame Score 6.7.



17 EKR RENO 407E

ASA# 3320468

Tattoo: 407E • BD: 2/5/17

Red • PB SM

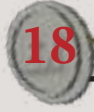
Sire: TRAXS DEADWOOD A82
MJ MARATHON 6W
C2 SHEAR FORCE 62W

Dam: CCE MS NORTHLAND 407B
KOP TRUE NORTH 103Y
CCE KLONDIKE RED 103Y

Act. BW	97
Act. WW	746
Adj. WW	849
1/6 WT	1212
Adj. YW	1340
ADG	3.85

EPDs	CE	BW	WW	YW	MCE	MM	MWW	MB	REA	BWratio	WWratio	WDA	API	TI
	4.8	5.8	72	109	7.4	27.4	63.3	-0.04	0.83	91	104	3.62	112	65

Out cross red genetics that I would keep females out of. He had a 104 WW ratio and ranked in the top 15% of the breed for WW and YW EPD's, the top 10% for MM and 4% for MWW. Homo polled solid red non diluter. Scrotal 35.5 cm. Frame Score 6.3.



18 EKR HOT TODDY 416E

ASA# 3320425

Tattoo: 416E • BD: 2/10/17

Red • PB SM

Sire: TRAXS DEADWOOD A82
MJ MARATHON 6W
C2 SHEAR FORCE 62W

Dam: CCE EKR MS YUKON 416B
MRL 128W
CCE EKR MS BARNEY 422P

Act. BW	90
Act. WW	744
Adj. WW	862
1/6 WT	1286
Adj. YW	1432
ADG	4.48

EPDs	CE	BW	WW	YW	MCE	MM	MWW	MB	REA	BWratio	WWratio	WDA	API	TI
	7.8	4.4	75	117	8.5	26.7	64.1	-0.01	0.84	100	105	3.9	124	70

You will like this dude, another outcross red bull with the maternal/performance punch. He ratioed 105 for both WW and YW. He ranks in the top 10% for WW, 5% for YW, 10% for MM, and 4% for MWW EPD's in the breed. Homo polled solid red non diluter. Scrotal 38 cm. Frame Score 6.3.



19 EKR DRIFTER 429E

ASA# 3320387

Tattoo: 429E • BD: 2/6/17

Red • PB SM

Sire: TRAXS DEADWOOD A82
MJ MARATHON 6W
C2 SHEAR FORCE 62W

Dam: CCE MS POWER MAG 429B
3D RED POWER 150Z
CCE EKR MS ULTRA MAG741T

Act. BW	90
Act. WW	722
Adj. WW	827
1/6 WT	1214
Adj. YW	1346
ADG	4.07

EPDs	CE	BW	WW	YW	MCE	MM	MWW	MB	REA	BWratio	WWratio	WDA	API	TI
	8.7	3.8	72	110	5.3	29.1	65	-0.03	0.9	99	101	3.63	119	68

It would be a toss up between lots 17, 18, or 19. All three of these half brothers would be great to turn out together to produce a uniformed set of calves. This dude had a 101 WW ratio and ranks in the top 15% for WW, 10% YW, 5% for MM, and 2% for MWW EPD's in the breed. Homo polled, only use on red cows. Scrotal 35 cm. Frame Score 6.5.



16 EKR JUDGE 395E

ASA# 3320412

Tattoo: 395E • BD: 3/4/17

Black • PB SM

Sire: BBS JUSTICE A207
MLC MR JUSTICE W744
TNT MISS APRIL N134

Dam: CCE EKR MS HOOSIER 395A
LCHMN BRIGHT LIGHT L122L
CCE EKR MS SPREAD ON 068X

Act. BW	97
Act. WW	684
Adj. WW	863
1/6 WT	1164
Adj. YW	1369
ADG	3.97

EPDs	CE	BW	WW	YW	MCE	MM	MWW	MB	REA	BWratio	WWratio	WDA	API	TI
	9.1	4.4	75	114	9.4	24.3	61.6	0.13	0.86	94	105	3.78	127	73

The youngest bull in the offering that has some impressive individual credentials boasting a 105 WW ratio and his WW, YW, and MWW EPD'S rank him in the top 10% of the breed. Homo Black, Homo Polled. Scrotal 38.5 cm. Frame Score 6.5.



20 EKR DEGA 431E

ASA# 3320392

Tattoo: 431E • BD: 2/9/17

Red • PB SM

Sire: JBS MR PACE 010B
ASR/GLS PACESETTER U862
JBS MISS FORCE 708X

Dam: CCE EKR SHOWII GIRL 431B
MRL RINGMAN 112Z
CCE EKR MS PHALTLLESS 742T

Act. BW	97
Act. WW	742
Adj. WW	853
1/6 WT	1228
Adj. YW	1364
ADG	4.02

EPDs	CE	BW	WW	YW	MCE	MM	MWW	MB	REA	BWratio	WWratio	WDA	API	TI
	6.9	4.1	72	110	8.4	28.3	64.2	0.2	0.92	92	104	3.71	128	73

Here is another female maker. He ranks in the top 10% for MM and 3% for MWW EPD'S plus a performance kick with being in the top 15% for WW and YW EPD'S. Hetro polled solid red non diluter. Scrotal 36.5 cm. Frame Score 6.5.



21 EKR TATER 457E ASA# 3320542

Tattoo: 457E • BD: 2/16/17
 Black • PB SM

Sire: RBS BOISE B63
 MR ISHEE CATALYST
 RBS MISS S63

Dam: CCE EKR JUDY 457B
 CCE EKR MS TOMKAT 271Z

Act. BW	97
Act. WW	716
Adj. WW	851
1/6 WT	1190
Adj. YW	1350
ADG	3.92

EPDs	CE	BW	WW	YW	MCE	MM	MWW	MB	REA	BWratio	WWratio	WDA	API	TI
	7.6	4	73	114	8.4	22.1	58.4	0.09	0.9	92	104	3.67	127	71

Outcross dependable power packed black genetics here. He had a 104 WW ratio and ranks in the top 15% for WW EPD's and top 10% for YW EPD's in the breed. His dam is a maternal sister to the power house lot 12 bull. Homo Black, Homo Polled Scrotal 38.5 cm. Frame Score 6.4.

22 EKR PROSPECTOR 458E ASA# 3320413

Tattoo: 458E • BD: 2/11/17
 Black • 3/4 SM 1/8 AN 3/32 AR 1/32 CS

Sire: CCR COWBOY CUT 5048Z
 TRIPLE C SINGLETARY S3H
 CCR MS 4045 TIME 7322T

Dam: CCE EKR MS DENALI 458B
 MRL 128W
 452

Act. BW	91
Act. WW	686
Adj. WW	783
1/6 WT	1202
Adj. YW	1324
ADG	4.26

EPDs	CE	BW	WW	YW	MCE	MM	MWW	MB	REA	BWratio	WWratio	WDA	API	TI
	12.3	2.3	69	94	10.6	30.2	64.6	0.41	0.6	100	96	3.65	135	79

Looking for a bull to produce some great females, look no closer. 458E ranks in the top 3% for MM EPD's and 4% for MWW EPD's in the breed. Homo Polled, Homo Black Scrotal 37 cm. Frame Score 6.5.

23 EKR RICHMOND 459E ASA# 3320342

Tattoo: 459E • BD: 2/19/17
 Black • PB SM

Sire: WS INDEPENDENCE T18
 CNS DREAM ON L186
 NICHOLS BEAUTY G84

Dam: CCE MS YUKON BLACK 459B
 MRL 128W
 CCE EKR MS. EXCEL 650S

Act. BW	96
Act. WW	646
Adj. WW	779
1/6 WT	1124
Adj. YW	1282
ADG	3.95

EPDs	CE	BW	WW	YW	MCE	MM	MWW	MB	REA	BWratio	WWratio	WDA	API	TI
	9.8	4.2	56	80	11	19.6	47.6	0.04	0.8	93	95	3.5	111	59

459E is out of the popular Indy bull that graced the pastures of Benda Simmentals, he goes back to our highly productive 650S cow that has produced many females that are influential in lot 12's and lot 21's pedigrees. Dependable genetics. Homo Polled, Hetro Black Scrotal 37 cm. Frame Score 6.4.



24 EKR RED RUSSIAN 461E ASA# 3320368

Tattoo: 461E • BD: 2/15/17
 Red • 3/4 SM 1/4 AR

Sire: TNT TOP CUT P274
 TNT FORTUNE BUILDER H122
 MISS ARNOLD K2231

Dam: CCE MS BLACK OUT 461B
 MRL BLACK OUT 226Y
 CCE EKR MS MEXICAN 718T

Act. BW	86
Act. WW	684
Adj. WW	803
1/6 WT	1226
Adj. YW	1372
ADG	4.48

EPDs	CE	BW	WW	YW	MCE	MM	MWW	MB	REA	BWratio	WWratio	WDA	API	TI
	4.8	2.5	80	124	7.8	15	54.8	-0.15	0.6	104	98	3.77	107	69

This Homo Polled red non diluter with a splash of chrome will be a favorite sale day. Use him on red or black to put that punch into you next calf crop. Out cross red genetics boasting top 5% of the breed for WW EPD's and 10% for YW EPD's. Scrotal 40 cm. Frame Score 6.5.

25 EKR DAKOT CASH 462E ASA# 3320480

Tattoo: 462E • BD: 2/27/17
 Black • PB SM

Sire: TNT TOP CUT P274
 TNT FORTUNE BUILDER H122
 MISS ARNOLD K2231

Dam: CCE MS POWER BALL 462B
 SPRINGCREEK LOTTO 52Y
 CCE MS ULTRA MAG 820U

Act. BW	93
Act. WW	668
Adj. WW	841
1/6 WT	1140
Adj. YW	1338
ADG	3.9

EPDs	CE	BW	WW	YW	MCE	MM	MWW	MB	REA	BWratio	WWratio	WDA	API	TI
	1.3	4.8	79	115	10.6	18.4	58	-0.23	0.89	97	103	3.64	95	64

Outcross performance black genetics here. 462E ratioed 103 for WW and ranks in the top 4% for WW EPD's and top 10% for YW EPD's in the breed. Homo Polled, Hetro Black Scrotal 38 cm. Frame Score 6.5.

26 EKR BLACK TODDY 499E ASA# 3320543

Tattoo: 499E • BD: 2/15/17
 Black • PB SM

Sire: LFE THE RIDDLER 323B
 LFE GOTHAM 819Y
 LFE BS CHARO 23Y

Dam: JBS MS DEW IT RIGHT 227B
 WELSHS DEW IT RIGHT067T
 JBS MISS FORWARD 851Z

Act. BW	80
Act. WW	686
Adj. WW	829
1/6 WT	1178
Adj. YW	1349
ADG	4.24

EPDs	CE	BW	WW	YW	MCE	MM	MWW	MB	REA	BWratio	WWratio	WDA	API	TI
	12.2	0.2	74	108	11.9	20.5	57.4	0.02	0.77	109	101	3.62	127	75

227B was our pick out of the South Dakota Source Sale a few years ago from Benda Simmentals. She did a bang up job with her Riddler calf with an exceptional set of balanced EPD's from birth to yearling. Genetic opportunity here! He ranks in the top 10% for WW EPD's and top 15% for YW EPD's in the breed and ratioed 101 for WW. Homo Black, Homo Polled Scrotal 36 cm. Frame Score 6.3.

27

EKR ALBERTA 544E

ASA# 3320487

Tattoo: 544E • BD: 2/2/17

Red • 3/8 SM 5/8 AR

Sire: ANDRAS IN FOCUS B152
 ANDRAS NEW DIRECTION R240
 ANDRAS KURUBA B111

Dam: MRL 128W
 CCE EKR MS CALAGARY 544C
 CCE MS SPREAD 801U

Act. BW	86
Act. WW	742
Adj. WW	853
1/6 WT	1284
Adj. YW	1418
ADG	4.94

EPDs	CE	BW	WW	YW	MCE	MM	MWW	MB	REA	BWratio	WWratio	WDA	API	TI
	10.2	1.1	71	115	8.2	17.3	52.9	0.27	0.27	102	104	3.8	122	69

If you are looking for a Simm/Red Angus bull here you go! 544E won top honors for ADG. He ratioed 102 for BW, 104 for WW, and 104 for YW, and out of a first calf heifer! Nice set of EPD's across the board. Homo Polled solid red non diluter. Scrotal 40 cm. Frame Score 6.5.



LOT 27

28

EKR SHAZAM 547E

ASA# 3320273

Tattoo: 547E • BD: 1/29/17

Black • 1/2 SM 1/2 AN

Sire: S A V FINAL ANSWER 0035
 S A V EMULOUS 8145

Dam: TRAXS DEADWOOD A82
 CCE EKR SHASTA 547C
 CCE EKR MS POWERFUL 811U

Act. BW	71
Act. WW	678
Adj. WW	770
1/6 WT	1186
Adj. YW	1297
ADG	4.2

EPDs	CE	BW	WW	YW	MCE	MM	MWW	MB	REA	BWratio	WWratio	WDA	API	TI
	13.9	0.4	69	108	8.4	26	60.6	0.3	0.55	118	94	3.47	127	71

This own son of Final Answer should do the trick for making nice females, he ranks in the top 15% for MM and MWW in the breed. He is out of a first calf heifer to boot. Homo Polled, Hetro Black Scrotal 37.5 cm. Frame Score 6.1.



S A V Final Answer – Sire of Lots 28 & 29

29

EKR LAST CALL 550E

ASA# 3320533

Tattoo: 550E • BD: 1/30/17

Black • 1/2 SM 1/2 AN

Sire: S A V FINAL ANSWER 0035
 S A V EMULOUS 8145

Dam: TRAXS DEADWOOD A82
 CCE EKR CALL GIRL 550C
 CCE EKR MS TC 903W

Act. BW	73
Act. WW	718
Adj. WW	813
1/6 WT	1216
Adj. YW	1330
ADG	4.12

EPDs	CE	BW	WW	YW	MCE	MM	MWW	MB	REA	BWratio	WWratio	WDA	API	TI
	15	-0.6	71	112	8.2	24.5	59.9	0.27	0.51	116	99	3.57	130	72

This Final Answer son comes in looking good across the board with a nice set of balanced EPD's, he is out of a first calf heifer. Homo Polled, Hetro Black Scrotal 38 cm. Frame Score 6.



LOT 29

30

EKR MR DEW 568E

ASA# 3320501

Tattoo: 568E • BD: 1/31/17

Black • 5/8 SM 3/8 AN

Sire: WELSHS DEW IT RIGHT067T
 SVF/NJC SENERITA N29

Dam: WHITESTONE WIDESPREAD MB
 CCE EKR MS SPREAD 568C
 CCE EKR MS TYSON 265Z

Act. BW	80
Act. WW	652
Adj. WW	748
1/6 WT	1154
Adj. YW	1268
ADG	4.19

EPDs	CE	BW	WW	YW	MCE	MM	MWW	MB	REA	BWratio	WWratio	WDA	API	TI
	11.6	0.7	61	86	9.2	15.4	45.8	0.11	0.53	109	91	3.39	109	62

568E is a stand out SimAngus bull out of a first calf heifer. Homo Black, Homo Polled Scrotal 37 cm. Frame Score 6.2.



LOT 30



LOT 31

31 EKR ELDERADO 572E

ASA# 3320461

Tattoo: 572E • BD: 2/1/17
 Black • PB SM
 Sire: WS BEEF KING W107
 WS PRIME BEEF Z8
 HSF MISS SKY 87U
 TH BLACK EDITION 8R
 Dam: CCE EKR MS ELDERADO 572C
 CCE EKR MS CUTTLES 350A

Act. BW	86
Act. WW	762
Adj. WW	890
1/6 WT	1312
Adj. YW	1472
ADG	4.55

EPDs	CE	BW	WW	YW	MCE	MM	MWW	MB	REA	BWratio	WWratio	WDA	API	TI
	14.5	1	81	121	13.1	19	59.3	0.07	0.85	101	109	3.87	140	79

Herd Bull potential here! 572E has been a stand out since birth; a genetic power house with phenotype and EPD's to back him up. He ratioed 101 for BW, 109 for WW, and 108 for YW. He ranks in the top 3% for WW and YW EPD's, and top 15% for MWW EPD's in the breed. His great grand dam is the mother to the standout lot 3. Homo Polled, Hetro Black Scrotal 40 cm. Frame Score 6.6.



LOT 32

32 EKR MARSHALL 629E

ASA# 3320258

Tattoo: 629E • BD: 2/20/17
 Red • 3/4 SM 1/4 AR
 Sire: KUNTZ MARSHALL 12Y
 KUNTZ SHERIFF 8A
 PEACOCK'S LI'L NETTIE 23Y
 LCHMN RED SPREAD 1271F
 Dam: CCE EKR. MS. SPREAD 629S
 EKR RIGHT LADY 912

Act. BW	87
Act. WW	680
Adj. WW	778
1/6 WT	1238
Adj. YW	1367
ADG	4.61

EPDs	CE	BW	WW	YW	MCE	MM	MWW	MB	REA	BWratio	WWratio	WDA	API	TI
	15.7	-0.3	66	111	11.2	27.4	60.3	-0.02	0.39	107	95	3.87	113	66

Maternal built in to this bull with a kick of performance and calving ease. Ranks in the top 10% for MCE, MM, and top 15% for MWW EPD's in the breed. His dam has ratioed 104 for WW on 10 calves. Homo Polled solid red non diluter. Scrotal 39 cm. Frame Score 6.6.

33 EKR JUDGE 722E

ASA# 3320262

Tattoo: 722E • BD: 2/17/17
 Black • 3/4 SM 3/16 AR 1/16 GV
 Sire: BBS MR JUSTICE W744
 JUSTICE A207
 TNT MISS APRIL N134
 THSF FREEDOM 300N
 Dam: CCE EKR MS TOBY 722T
 HPL 1702G BALANCER N341

Act. BW	84
Act. WW	668
Adj. WW	753
1/6 WT	1210
Adj. YW	1328
ADG	4.48

EPDs	CE	BW	WW	YW	MCE	MM	MWW	MB	REA	BWratio	WWratio	WDA	API	TI
	9.7	0.4	65	102	10.9	17.3	49.9	0.06	0.9	111	92	3.75	114	65

Outcross black genetics with performance in the pedigree. Homo Polled, Hetro Black Scrotal 37 cm. Frame Score 6.2.



LOT 35

34 EKR KODIAK 729E

ASA# 3320337

Tattoo: 729E • BD: 2/21/17
 Red • 5/8 SM 3/8 AR
 Sire: MRL BLACK BEAR 79S
 MRL 128W
 MRL MISS 842S
 LMAN MILKY WAY 2434B
 Dam: CCE EKR MS SNICKERS 729T
 EKR RS 603F

Act. BW	102
Act. WW	748
Adj. WW	864
1/6 WT	1284
Adj. YW	1428
ADG	4.43

EPDs	CE	BW	WW	YW	MCE	MM	MWW	MB	REA	BWratio	WWratio	WDA	API	TI
	3.8	5.7	72	108	7.8	21.3	57.4	0.02	0.53	91	106	4.03	101	60

729E is out of the old stand by Kodiak, he will add pounds a some frame to you next set of calves. He would be a good choice to use on Red Angus based cows. Ratioed 106 for WW and 104 for YW. His dam ratioed 104 for WW on 9 calves. Homo Polled solid red non diluter. Scrotal 39 cm. Frame Score 7.

35 EKR COLORADO 831E

ASA# 3320365

Tattoo: 831E • BD: 2/19/17
 Red • PB SM
 Sire: MJ MARATHON 6W
 TRAXS DEADWOOD A82
 C2 SHEAR FORCE 62W
 TNT GUNNER N208
 Dam: CCE EKR MS SHOT GUN 831U
 EKR MS HEAVEN 807

Act. BW	98
Act. WW	722
Adj. WW	829
1/6 WT	1178
Adj. YW	1311
ADG	3.77

EPDs	CE	BW	WW	YW	MCE	MM	MWW	MB	REA	BWratio	WWratio	WDA	API	TI
	7.8	4.5	69	102	8.3	28.6	63	0.01	0.65	95	101	3.67	116	66

831E's dam has been a no miss cow from day one, she has ratioed 108 for WW on 8 calves. Females should be keepers out of him plus a performance kick. He ratioed 101 for WW. Homo Polled solid red non diluter. Scrotal 36 cm. Frame Score 6.6.

36**EKR CPT DAN 843E**

ASA# 3320395

Tattoo: 843E • BD: 2/12/17
Black • 1/4 SM 3/4 AN

Act. BW	97
Act. WW	668
Adj. WW	727
1/6 WT	1186
Adj. YW	1273
ADG	4.28

Sire: R B TOUR OF DUTY 177
B A LADY 6807 305
GW LUCKY DICE 187H

Dam: CCE EKR MS DICE 843U
146

EPDs	CE	BW	WW	YW	MCE	MM	MWW	MB	REA	BWratio	WWratio	WDA	API	TI
	11.8	1.7	63	105	8.9	27.7	59.3	0.4	0.71	97	89	3.62	117	69

A nice set of balanced EPD's, he would be an excellent choice to use on higher percentage based Simmental cows. Homo Black, Homo Polled Scrotal 36 cm. Frame Score 6.7.

37**EKR DOJ 926E**

ASA# 3320388

Tattoo: 926E • BD: 2/26/17
Black • 3/4 SM 1/8 AN 1/8 MX

Act. BW	87
Act. WW	672
Adj. WW	795
1/6 WT	1188
Adj. YW	1339
ADG	4.26

Sire: BBS JUSTICE A207
MLC MR JUSTICE W744
TNT MISS APRIL N134
TNT TOP CUT P274

Dam: CCE EKR MS TC 926W
CCE MS. TRAVELER 660S

EPDs	CE	BW	WW	YW	MCE	MM	MWW	MB	REA	BWratio	WWratio	WDA	API	TI
	5.5	2.8	74	116	9.4	20.5	57.5	-0.02	0.89	107	97	3.78	117	70

Outcross black performance bull out of a proven cow family. He ranks in the top 15% for both WW and YW EPD's in the breed. Hetro Black, Hetro Polled Scrotal 36 cm. Frame Score 6.4.

38**EKR TAHOE 932E**

ASA# 3320376

Tattoo: 932E • BD: 2/24/17
Red • PB SM

Act. BW	99
Act. WW	684
Adj. WW	799
1/6 WT	1246
Adj. YW	1393
ADG	4.64

Sire: TRAXS DEADWOOD A82
MJ MARATHON 6W
C2 SHEAR FORCE 62W

Dam: CCE EKR MS TOM KAT 932W
TNT TOP GUN R244
EKR MISS LIGHTENING 823

EPDs	CE	BW	WW	YW	MCE	MM	MWW	MB	REA	BWratio	WWratio	WDA	API	TI
	8.1	4.5	75	120	5	22.2	59.7	-0.07	0.77	94	98	3.94	118	68

Here is a pound maker here! 932E ranks in the top 10% for WW EPD's, top 3% for YW EPD's, and top 15% for MWW EPD's in the breed, ratioed 102 for YW. Solid red non diluter, hetro polled. Scrotal 41 cm. Frame Score 6.7.

**TRAXS Deadwood – Sire of Lot 38****39****EKR BLACK SPROUT 944E**

ASA# 3320333

Tattoo: 944E • BD: 2/16/17
Black • 3/4 SM 1/4 AR

Act. BW	92
Act. WW	680
Adj. WW	763
1/6 WT	1222
Adj. YW	1335
ADG	4.48

Sire: RBS BOISE B63
MR ISHEE CATALYST
RBS MISS S63

Dam: CCE EKR MS TC 944W
TNT TOP CUT P274
CCE EKR MS RMB DUKE 209M

EPDs	CE	BW	WW	YW	MCE	MM	MWW	MB	REA	BWratio	WWratio	WDA	API	TI
	7.5	2.5	69	108	10.1	21.6	56.3	0.06	0.8	102	93	3.77	131	70

Outcross black genetics with power in the pedigree. Homo Black, Homo Polled Scrotal 40 cm. Frame Score 6.5.

**LOT 39****40****EKR JAG 981E**

ASA# 3320544

Tattoo: 981E • BD: 3/1/17
Black • PB SM

Act. BW	101
Act. WW	736
Adj. WW	900
1/14 WT	1268
Adj. YW	1465
ADG	4.4

Sire: BBS JUSTICE A207
MLC MR JUSTICE W744
TNT MISS APRIL N134

Dam: MS CANDACE HR/RR W962
TNT GUNNER N208
GFI CANDACE G51

EPDs	CE	BW	WW	YW	MCE	MM	MWW	MB	REA	BWratio	WWratio	WDA	API	TI
	5.7	5.3	81	122	10.6	25.9	66.5	0.1	0.89	91	110	4.08	119	75

A pure power bull with a maternal kick. 981E ranks in the top 2% for WW, YW, and MWW EPD's in the breed, he ratioed 110 for WW and 107 for YW. His dam is a maternal sister to our old donor who is Lot 1's dam; she has ratioed 105 on 7 calves. Hetro Black, Hetro Polled Scrotal 37 cm. Frame Score 6.9.

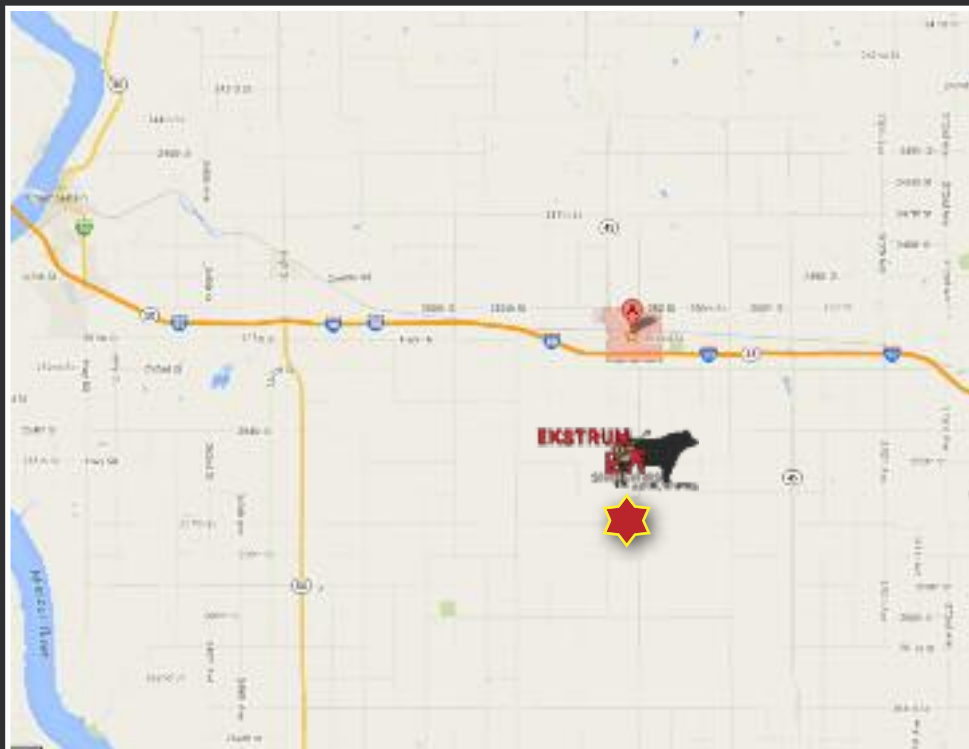
**LOT 40**



FIRST-CLASS MAIL
U.S. POSTAGE PAID
LivestockDirect
PERMIT NO. 29

36220 257th Street
Kimball, SD 57355

Created by:
ASA PUBLICATION, INC
One Genetics Way, Bozeman, MT 59718
Phone: 406-587-2778
www.simmgene.com



Sale location
36220 257th Street
5 Miles South of Kimball, SD